



Clinical Research Priority Program UMZH

Symposium

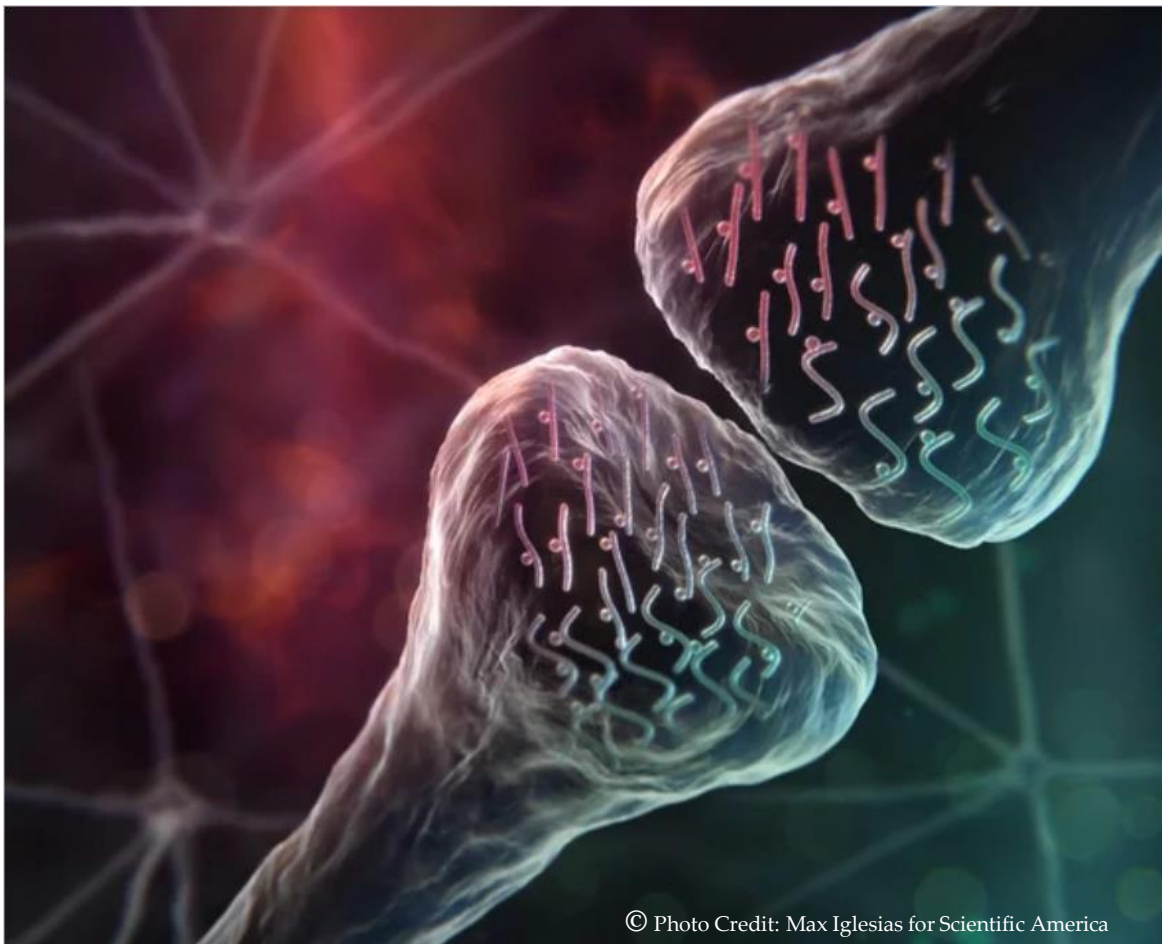
CRPP Synapse, Trauma & Addiction

From synaptic plasticity to clinical change: Aversive and drug memory mechanisms in PTSD and addiction

Tuesday, 3 February 2026

13.00 - 17.30h

UZH Zentrum, KOL-G-217



Invitation

Stress- and trauma- related disorders and addiction are driven by maladaptive memory processes, including intrusive, aversive, and drug-related memories that cut across diagnostic boundaries. While cognitive-behavioural psychotherapy remains the first-line treatment for trauma- and addiction-related disorders, many patients remain symptomatic, highlighting the need for novel, mechanism-based interventions.

Recent advances span multiple levels of analysis: from daily diary and phenomenological studies capturing real-world intrusive memories, to animal and human neuroscience uncovering synaptic plasticity, reconsolidation, and neuromodulatory mechanisms, to clinical trials combining psychotherapy with pharmacological agents targeting memory processes. The **Clinical Research Priority Program “Synapse, Trauma and Addiction”** brings these approaches together to advance translational strategies for modifying maladaptive memories in PTSD and addiction- and beyond. In this final CRPP symposium, we will discuss how insights from **human and animal science** can be integrated to bridge basic discovery and clinical change. With keynote contributions from **Michael Anderson (Cambridge)**, **Merel Kindt (Amsterdam)**, and **Judith Homberg (Donders Institute)**, the symposium will foster dialogue across disciplines on how to translate memory science into effective, scalable treatments.

You are cordially invited to join our Clinical Research Priority Program Symposium!

Birgit Kleim and Boris Quednow

Invited Speakers

Prof. Dr. Michael C. Andersen

MRC Cognition and Brain Sciences Unit, Cambridge (UK)

Prof. Dr. Dominik Bach

Centre for Artificial Intelligence and Neuroscience, University of Bonn (GER)

Prof. Dr. Judith Homberg

Donders Institute, Radboud University Nijmegen (NL)

Prof. Dr. Merel Kindt

Department of Psychology, University of Amsterdam (NL)

UZH Hosts & Sessions Chairs

Prof. Dr. Birgit Kleim

Department of Psychology & Adult Psychiatry and Psychotherapy

Prof. Dr. Boris Quednow

Department of Adult Psychiatry and Psychotherapy

Aversive memories: Translating Basic Science to Clinical Treatment

12.00 – 12.45	<i>Registration</i>
12.45 – 13.00	<i>Welcome introduction</i>
Session 1:	Understanding and controlling aversive memories across levels and disorders (Chair: Birgit Kleim)
13.00 – 13.45	Michael Anderson, PhD Memory control theory: From cognitive science to clinical relevance
13.45 – 14.25	Amelie Zacher, MSc & Lina Dietiker, MSc Intrusive memories in everyday life: EMA-informed phenomenology across addiction and trauma, and its neuroscientific and clinical Implications
14.30 – 15.00	<i>Coffee break</i>
Session 2:	From synaptic plasticity to translation (Chair: Boris Quednow)
15.00 – 15.45	Judith Homberg, PhD A translational approach to the cognitive and neurotoxic effects of GHB addiction
15.45 – 16.10	Rick Heslen, MSc Predator-odour-related stress behaviour and memory in rats
16.10 – 16.20	<i>Short Biobreak</i>
Session 3:	Modulating aversive memories: Reconsolidation and clinical innovation (Chair: Birgit Kleim & Boris Quednow)
16.20 – 17.00	Merel Kindt, PhD Mechanisms or metaphors: Emotional memory in psychological treatment
17.00 – 17.30	Dominique Bach, MD, PhD, Birgit Kleim, PhD, Boris Quednow, PhD Translating memory science into clinical change: What have we learned and where do we go next?
17.30	<i>Closing and Apéro</i>

Information

Coffee, snacks and an apéro will be provided for registered participants.

Registration

Participation in the symposium is free of charge. Registration is required, with a deadline of January 23, 2026. Please register via the website:

[Symposium CRPP STA 2026 | CRPP Synapse, Trauma & Addiction | UZH](#)

Contact

crpp-sta@bli.uzh.ch

Location and Travel Directions

University of Zurich, main campus Rämistrasse



Tram: Lines 6 or 10 from Zurich Main Station to “ETH/Universitätsspital”, followed by a short walk downhill to the UZH main campus

Tram: Lines 8 or 9 from “Bellevue” to “Kantonsschule”, followed by a short walk uphill to the UZH main campus